

SALES
242 Dedworth Rd
Windsor
Berkshire
SL4 4JR

Tel: 01753 621234
Email: post@horler.co.uk

SALES
1 Temple Cottage
The Green
Datchet, Berkshire
SL3 9BJ

Tel: 01753 546667
Email: mail@stephenuren.co.uk



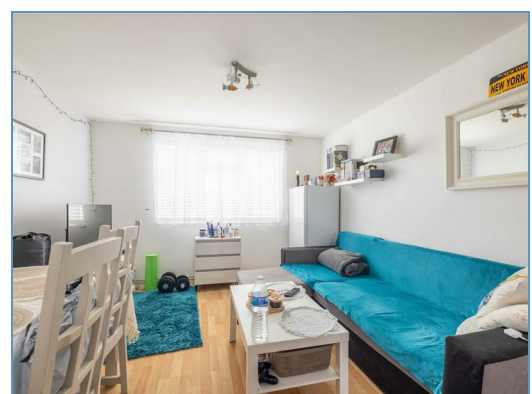
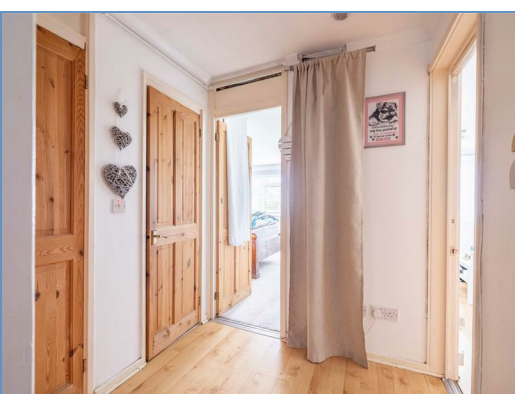
HORLER
Incorp. Stephen Uren



36 Luff Close, Windsor, SL4 4NP
£235,000

A well-presented one-bedroom ground floor maisonette in Windsor, featuring a spacious reception room, a cosy bedroom, and a convenient bathroom. It also includes a private courtyard-style front garden with useful storage.

Ideally located near local schools, shops, and transport links, making it a great option for first-time buyers or investors.



Property Summary

Located in Luff Close, Windsor, this charming one-bedroom ground floor maisonette offers a comfortable and practical living space. The property features a well-sized reception room, ideal for both relaxing and entertaining, along with a cosy bedroom that provides a peaceful retreat. A conveniently positioned bathroom serves both residents and visitors.

A notable highlight is the front garden, designed as a courtyard space, which also benefits from two brick-built storage cupboards—perfect for keeping outdoor items neatly organised.

The property enjoys a convenient location close to local schools, shops, and excellent transport links, making everyday living easy and accessible.

Combining comfort with functionality, this maisonette is an excellent opportunity for first-time buyers or investors looking to expand their portfolio.

General information

Lease: Approx 87 years remaining

Service charge: Approx £130 per annum including buildings insurance

Legal note

Although these particulars are thought to be materially correct, their accuracy cannot be guaranteed and they do not form part of any contract.

